

# The View

2018 | Third Quarter

Updates, News, and Benefits For Telco Members



Connecting Families  
& Building Futures

TELCO BRANCHES WILL  
BE CLOSED ON THE  
FOLLOWING HOLIDAYS

Columbus Day  
October 8

Veteran's Day  
November 12

Thanksgiving  
November 22

Black Friday  
November 23

Christmas  
December 25

October 18<sup>th</sup>

**Member  
Appreciation  
Day**

Visit a branch  
to celebrate!

## Holiday Rewards

Reward yourself while buying for others this season. With our Visa Extra Awards program you will Get **1 point for every \$1** you spend when using your Telco Visa and **1 point for every \$2** spent when using your Telco Debit card. Redeem points for travel and merchandise.

Visit [www.TELCOccu.org/extra-rewards](http://www.TELCOccu.org/extra-rewards) for details.

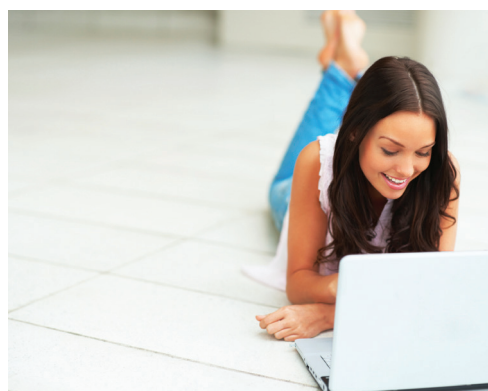


From now to the end of the year, our mountains will change colors, a chill will enter the air and our calendars will be full of opportunities to get together With family and friends. We are grateful for members like you and have created ways for you to benefit even more from your Telco membership with limited time offers to help you through the holidays.

Inside this issue of The View, your will see information on the return of our popular Holiday Loans for \$1000, No Payment for 90 days on new Auto Loans, along with our newest Credit Builder Loan program designed to help build your credit score.

### 24/7 Banking

We're local and will be happy to talk to you about ways we can help you at any of our eight branches. If you prefer to do business after hours, you can always access your accounts 24/7 with Home Banking, our Telco Mobile smartphone app or by calling Telco Teller 800-522-6371.



## BenefitsInside

- New Credit Builder Loan

Limited Time Offers\*:

- \$1000 Holiday Loan
- 90 Day No Payment Auto Loans

\* Certain Restrictions May Apply

## CREDIT BUILDER LOAN

Telco Community Credit Union is excited to offer a new product to members who are hoping to safely establish a credit history. The Credit Builder Loan, \$1,000 for a 12 month term, is designed to extend credit to members who have limited or no credit experience, and to report monthly to the credit reporting agencies while also safely holding the loan proceeds. When the loan is paid in full, the member may use those funds and/or transition to another loan product like a Secured VISA. Simply apply at your preferred TCCU branch at that time.

With loan payments made on time and as agreed, this Credit Builder Loan product may help open the door to future access to credit and other TCCU loans. Stop in at any of our locations to discuss how the Credit Builder Loan might help you with your goals.

**Let the Adventure to Better Credit Begin**

OUR NEW CREDIT BUILDER LOAN OFFERS A WAY TO IMPROVE YOUR CREDIT IN JUST 12 MONTHS  
APPLY TODAY FOR A RATE OF ONLY 15%\*

**Telco Community Credit Union**

\*CERTAIN RESTRICTIONS MAY APPLY

## UNDERSTANDING YOUR CREDIT SCORE

Those who check their credit score regularly are more likely to understand how scoring works than those who don't according to a survey released by the Consumer Federation of America and VantageScore.

Understanding how credit scores work translates into knowing how a credit score can impact interest rates, which ultimately impacts how much it costs individuals to borrow money.

Whether you're intending to use your credit soon or simply looking for ways to improve it for the future, here are four things you should know about your credit score:

### 1. Missed Payments can lower your score

If you miss a payment on your credit card, car note, or student loans, then your credit score can be negatively affected. Payment history is one of the three major components of your credit score. When you pay your bills on time each month your score will gradually increase.

### 2. Keeping a high credit card balance lowers your score

Carrying a high credit card balance month to month can harm your credit score. Credit utilization is the percent of your credit limit that you use each month, and is a key component of your credit score. It is a good rule of thumb to keep your credit utilization ratio under 30% of your overall credit limit. Not to mention having a large credit card balance can feel overwhelming to pay down.

### 3. Checking your credit report will not change your score

Annual check-ups on your credit report will make sure they are error-free and will not impact your credit score. This can be done for free each year at [www.annualcreditreport.com](http://www.annualcreditreport.com) or by calling 800-322-8228. When you regularly monitor your score, you can see how your financial decisions are impacting your credit potential and can check for identity fraud.

### 4. Your credit score consists of five weighted criteria

Payment history: 35%, Amounts owed: 30%, Length of credit history: 15%, New credit: 10%, and Types of credit used: 10%.

**Credit Union**

O	N	I	S	R	S	F	D	T	M	M	D	M	E
R	S	T	A	W	T	W	K	M	D	T	I	E	C
A	E	T	V	I	C	E	S	O	E	A	C	L	O
T	G	I	I	N	E	O	T	O	N	C	R	I	O
E	A	F	N	V	L	O	A	N	W	H	E	N	P
S	G	O	G	E	O	Y	K	A	O	E	D	E	E
C	T	R	S	S	U	T	E	R	R	C	I	O	R
M	R	P	R	T	E	I	H	L	E	K	T	F	A
F	O	R	A	M	A	N	O	E	B	I	U	C	T
E	M	O	T	E	V	U	L	P	M	N	N	R	I
F	E	F	E	N	T	M	D	M	E	G	I	E	V
S	O	T	I	T	N	M	E	N	M	D	O	D	E
E	E	O	N	E	A	O	R	E	W	B	N	I	E
E	O	N	R	F	E	C	D	T	P	O	N	T	D

NOT FOR PROFIT  
RATES  
STAKEHOLDER  
LOAN  
COMMUNITY  
ATM  
COOPERATIVE  
LINE OF CREDIT  
CREDIT UNION  
INVESTMENT  
MEMBER OWNED  
SAVINGS RATE  
MORTGAGE  
CHECKING



# *Tis the Season for Giving*

WITH OUR LIMITED TIME\*

## *Holiday Loan Specials*



### **\$1000 HOLIDAY LOAN\***

12 MONTHLY PAYMENTS  
AS LOW AS \$100\*

### **AUTO LOANS**

### **NO PAYMENT FOR 90 DAYS\***

- Get a new loan or bring an existing to Telco
- Great rates on cars/trucks/boats/RVs/motorcycles

**\*OFFER GOOD OCTOBER 1 - DECEMBER 31, 2018**

CERTAIN RESTRICTIONS MAY APPLY.

### **THURSDAY, OCTOBER 18 MEMBER APPRECIATION DAY**

Why do millions of people worldwide choose credit unions? Because credit unions have a "people-first" philosophy that impels them to constantly improve the communities and lives of their members. This year we are celebrating 70 years of International Credit Union Day and how members find their hope, their platinum lining through credit unions. Visit any of our Telco branches on **Thursday, October 18** and celebrate with your fellow member owners!



## BRANCH LOCATIONS & BUSINESS HOURS

### Asheville - Leicester Branch

710 New Leicester Highway  
Asheville, NC 28806  
828.225.5919

### Asheville - Tunnel Rd. Branch

36 Tunnel Road  
Asheville, NC 28805  
828.252.6888

### Skyland Branch

1871 Hendersonville Road  
Asheville, NC 28803  
828.210.2090

### Candler Branch

1141 Smokey Park Highway  
Candler, NC 28715  
828.633.6604

### Weaverville Branch

34 Northcrest Road  
Weaverville, NC 28787  
828.645.6003

### Hendersonville Branch

1452 7th Avenue East  
Hendersonville, NC 28792  
828.595.9841

### Morganton Branch

127 West Parker Road  
Morganton, NC 28655  
828.433.0016

### Hickory Branch

355 US Highway 70 SW  
Hickory, NC 28602  
828.322.8566

### Branch Hours:

Monday - Thursday  
8:30 am - 5:00 pm

Friday: 8:30 am - 6:00 pm  
Drive-Thru Hours:

Monday - Thursday  
8:30 am - 5:30 pm

Friday: 8:30 am - 6:00 pm

## TELCOccu.org

Your Online Resource For:

Home Banking  
Online Bill Pay  
Mobile Banking  
Current Rates  
and more...

**800.522.6371**  
24/7 Account Access

**828.252.6458**  
Member Services

# EMPLOYEES OF THE MONTH

## MAY



**TORI DAVIS**  
HEAD TELLER  
TUNNEL ROAD, ASHEVILLE

## JUNE



**CLINT EDDINGS**  
MEMBER REPRESENTATIVE  
HICKORY

## JULY



**JOHN PLEMMONS**  
IT SPECIALIST  
LEICESTER

## AUGUST



**SUSAN PATTON -**  
MEMBER REPRESENTATIVE  
MORGANTON



## Connect with US!

"Like" us on Facebook at  
[Facebook.com/ TelcoCCU](https://www.facebook.com/TelcoCCU)

### Answer Key



## Tunnel Road Branch

The friendly staff at our Tunnel Road location donate their time throughout the year by volunteering with local non-profit efforts that help improve lives within western North Carolina.

In addition to routinely preparing and serving meals at Asheville's WNC Rescue Ministries, the Telco branch collects canned items for food drives and school supplies to support the local communities. Congratulations to Branch Manager Randy Bishop and his dedicated team!

## TELCO BRANCH SPOT LIGHT

